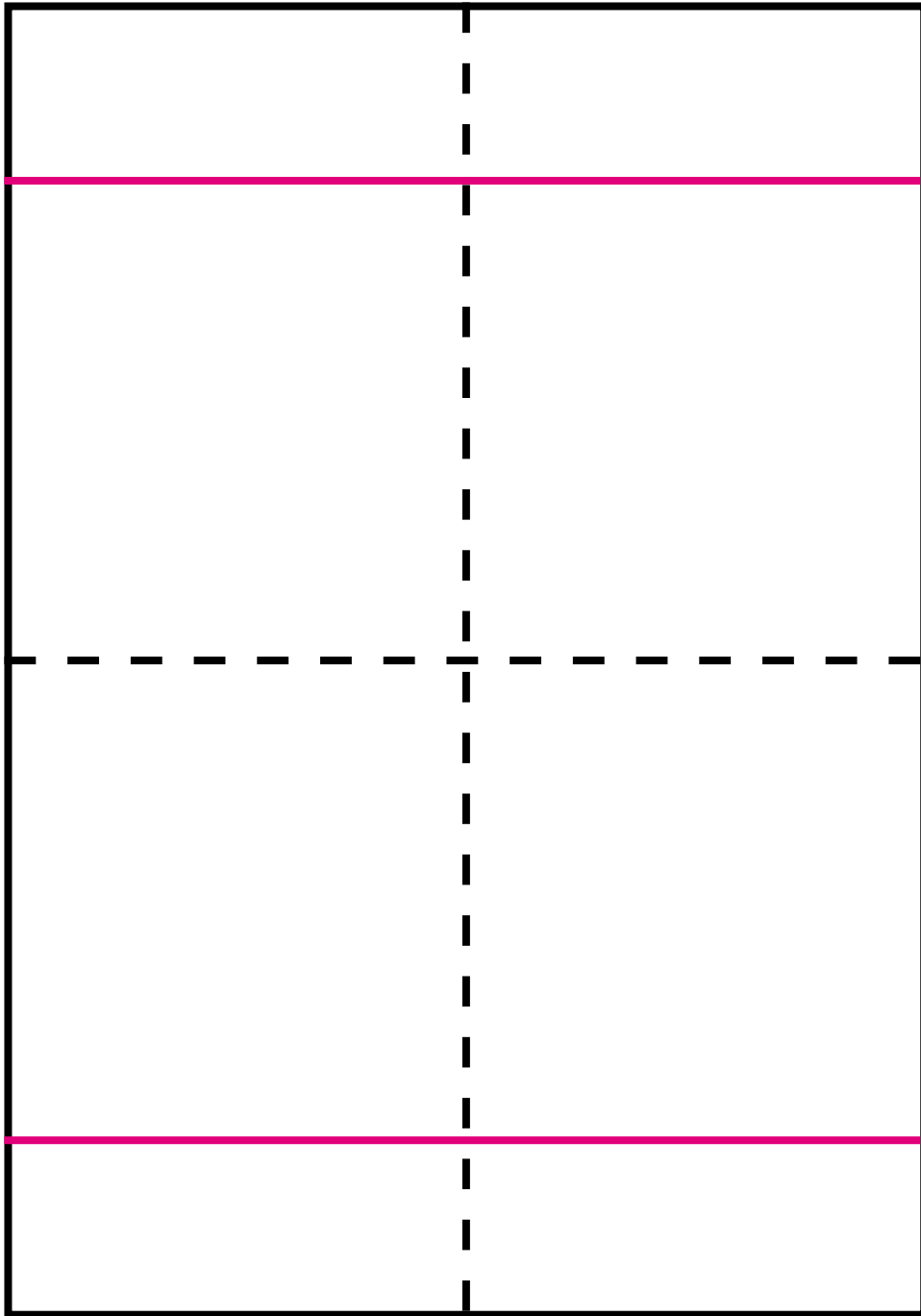
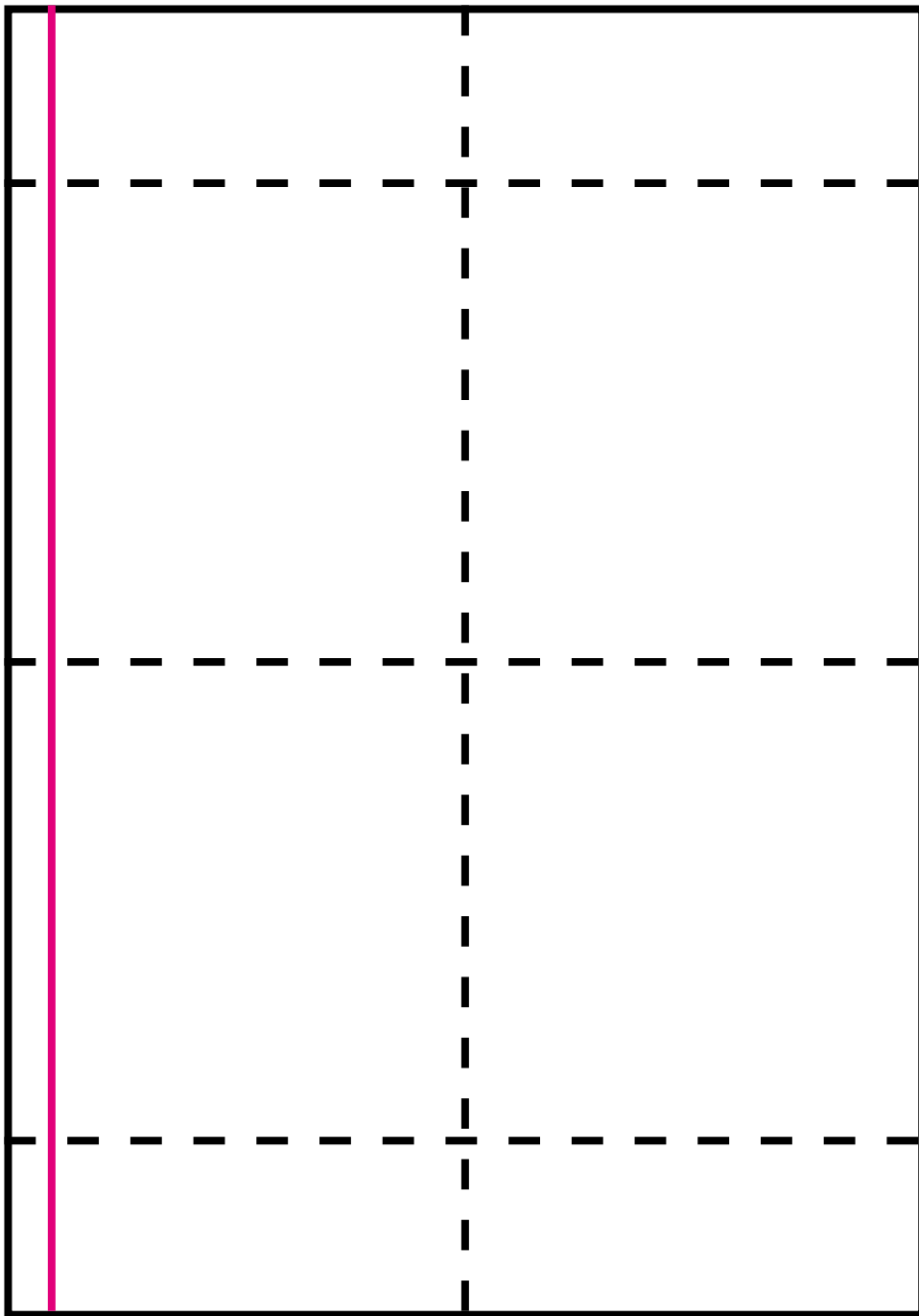


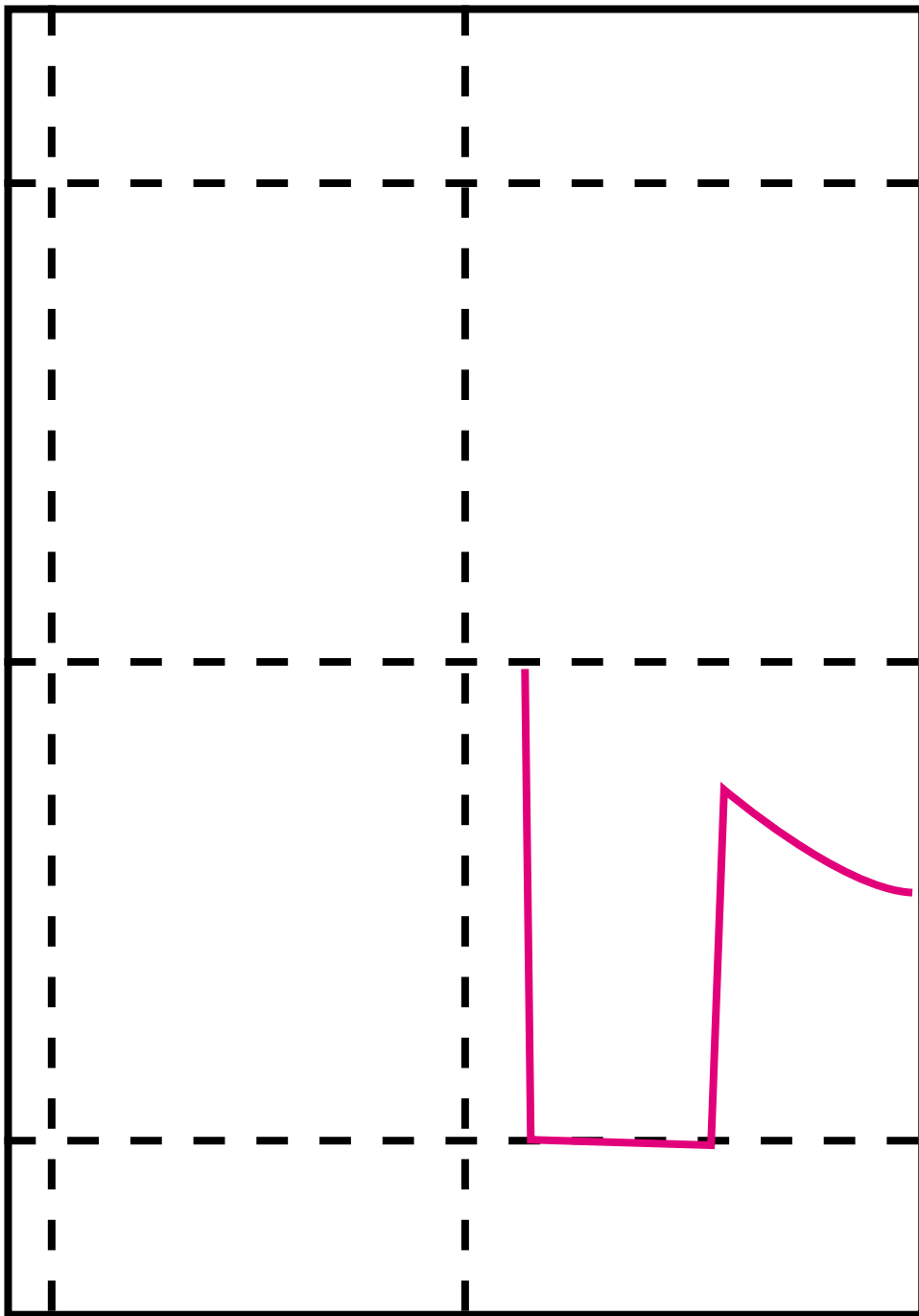
1.) Blatt 2 mal mittig unterteilen



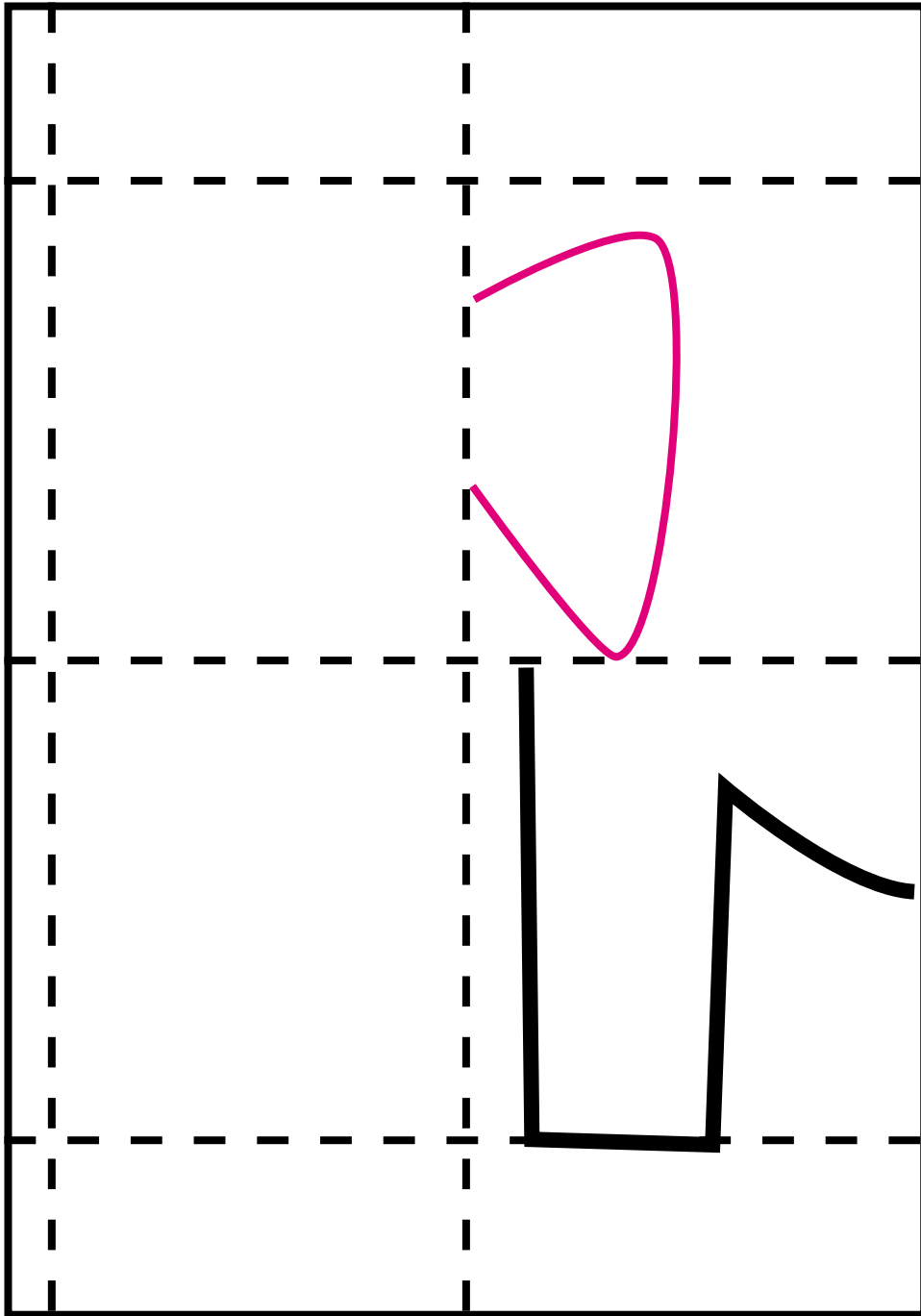
2.) Blatt oben und unten 4  
cm Rand (Linealbreite)



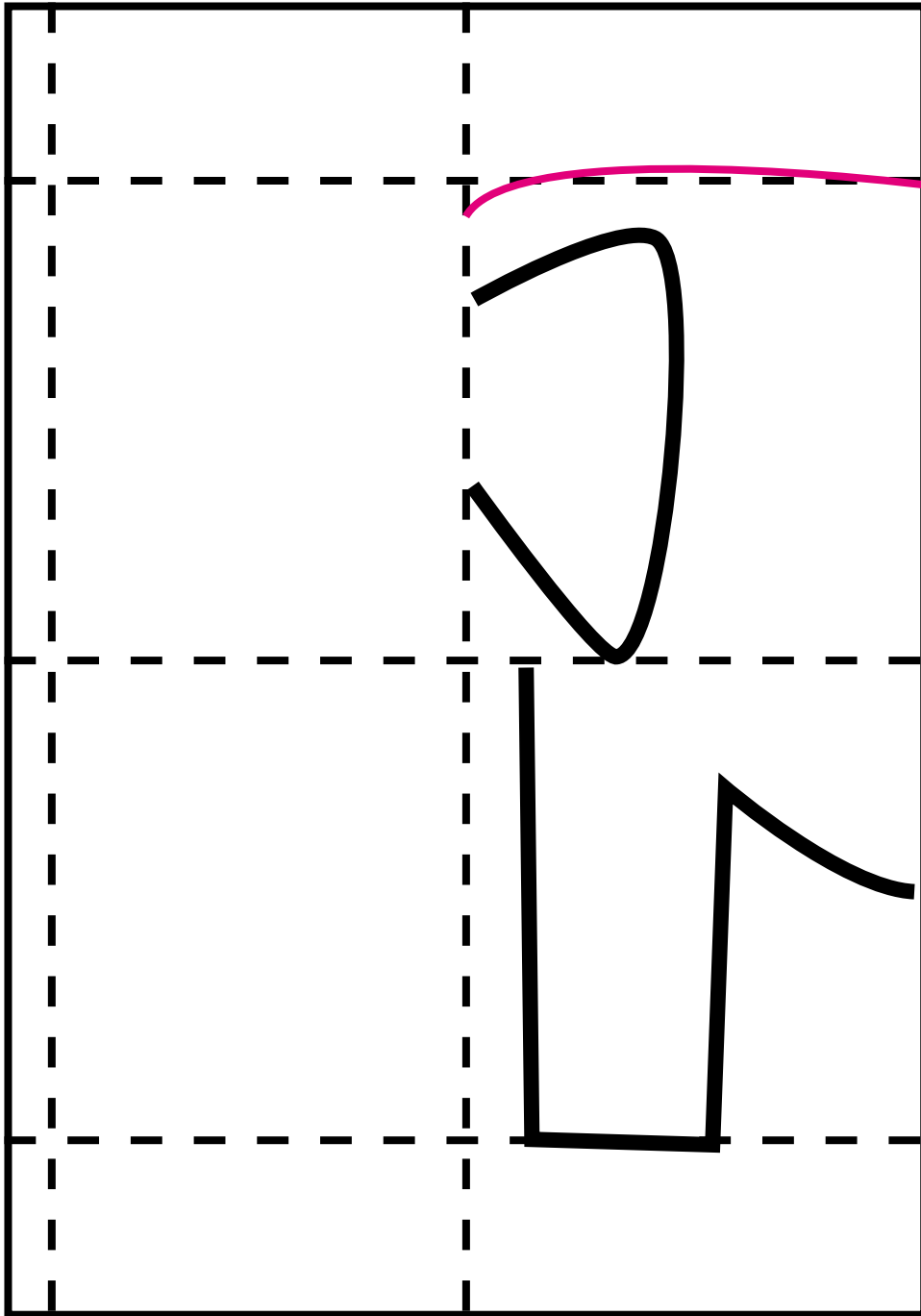
3.) Linie links: 1cm vom  
Rand



4.) Elefantenbein und  
Bauch

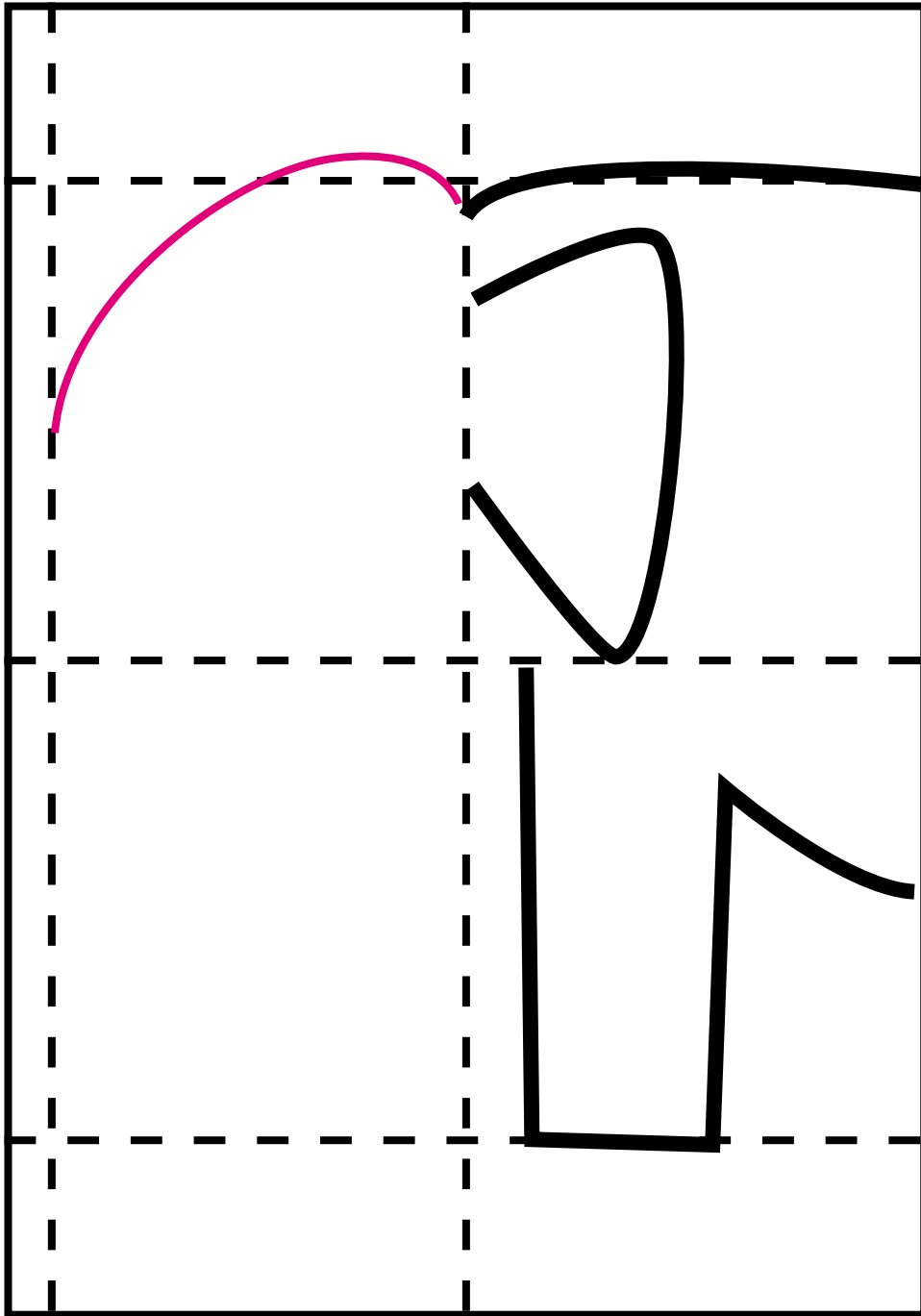


5.) Ohr

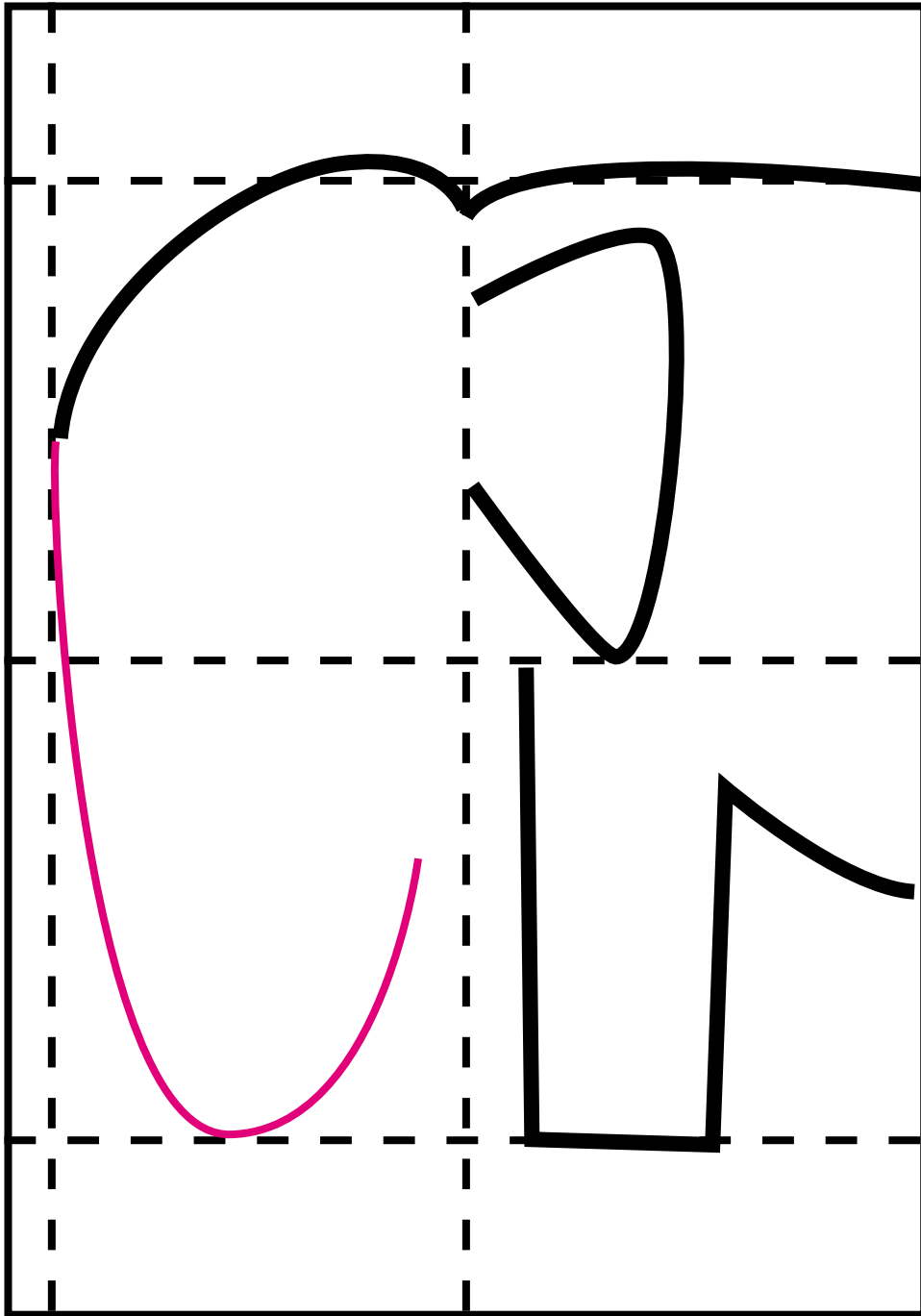


6.) Rücken

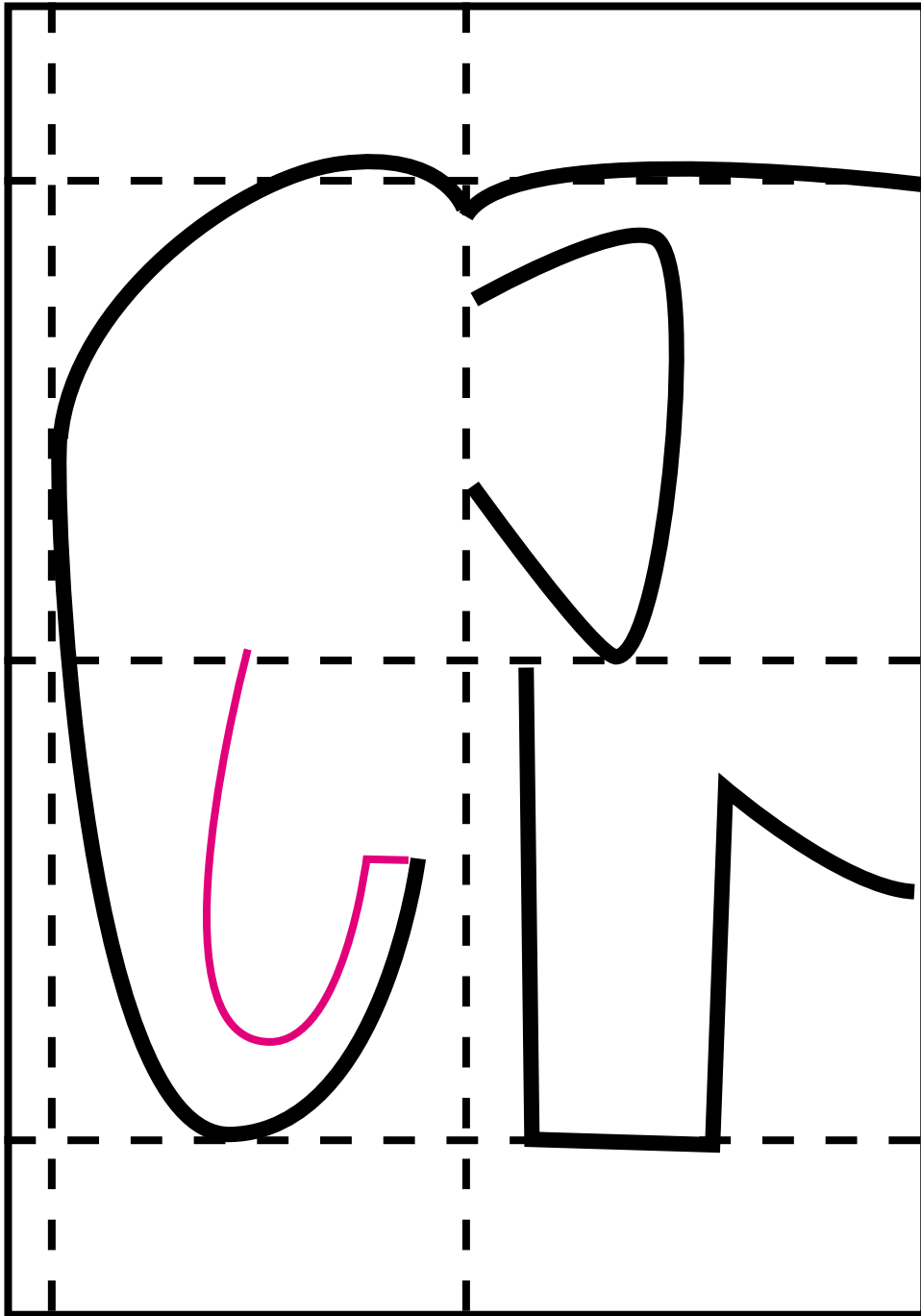




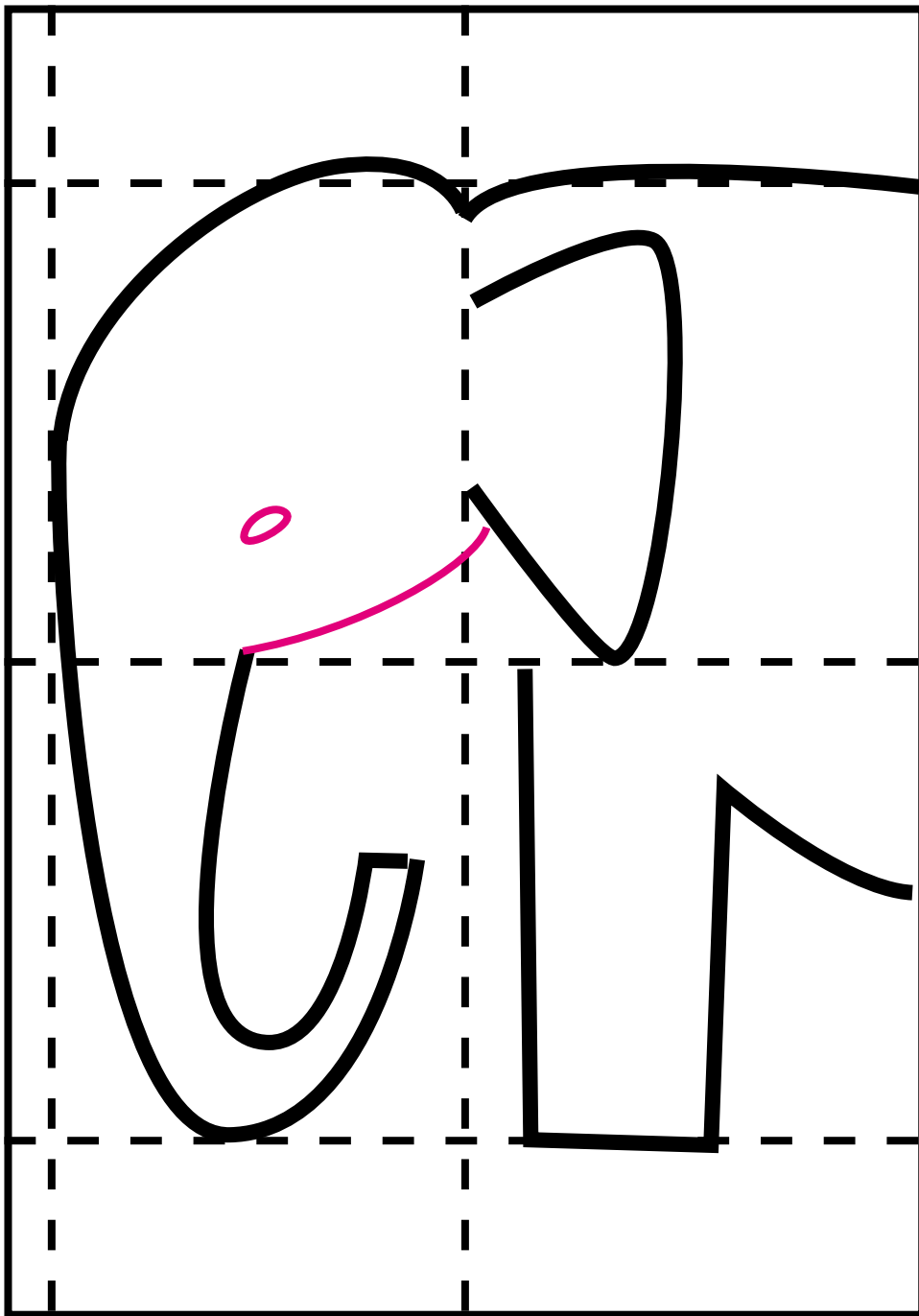
7.) Stirn



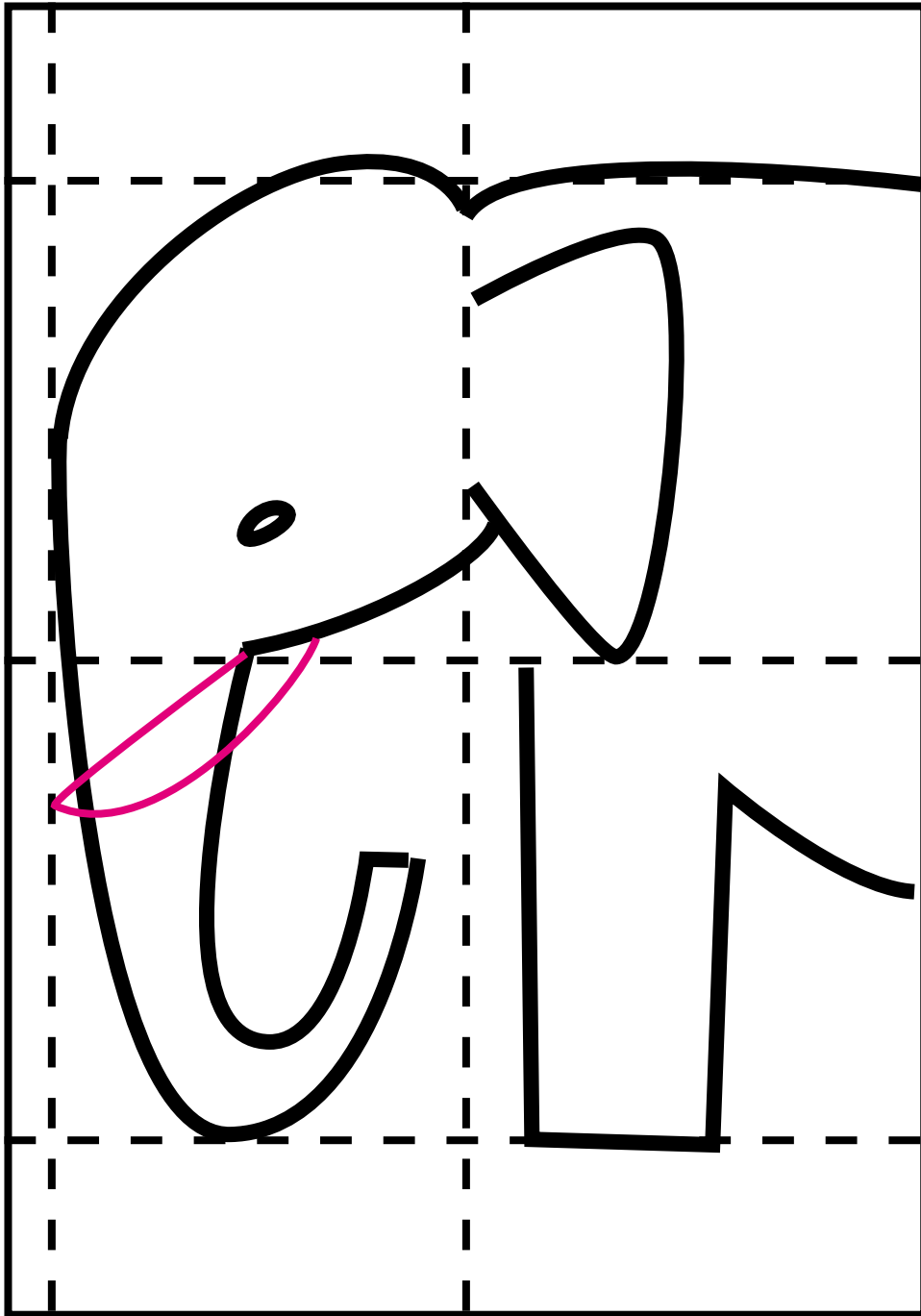
8.) Rüssel Teil 1



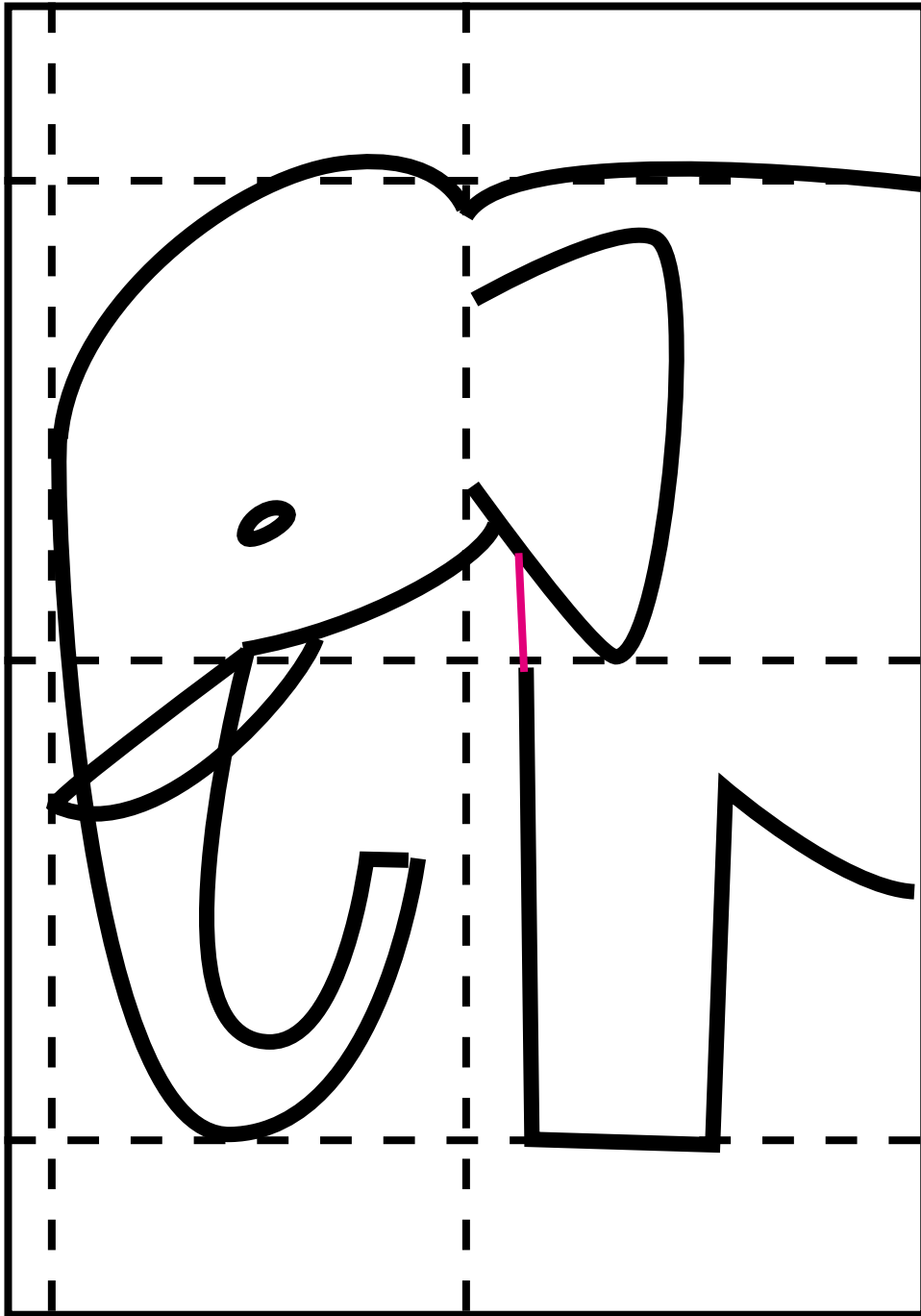
9.) Rüssel Teil 2



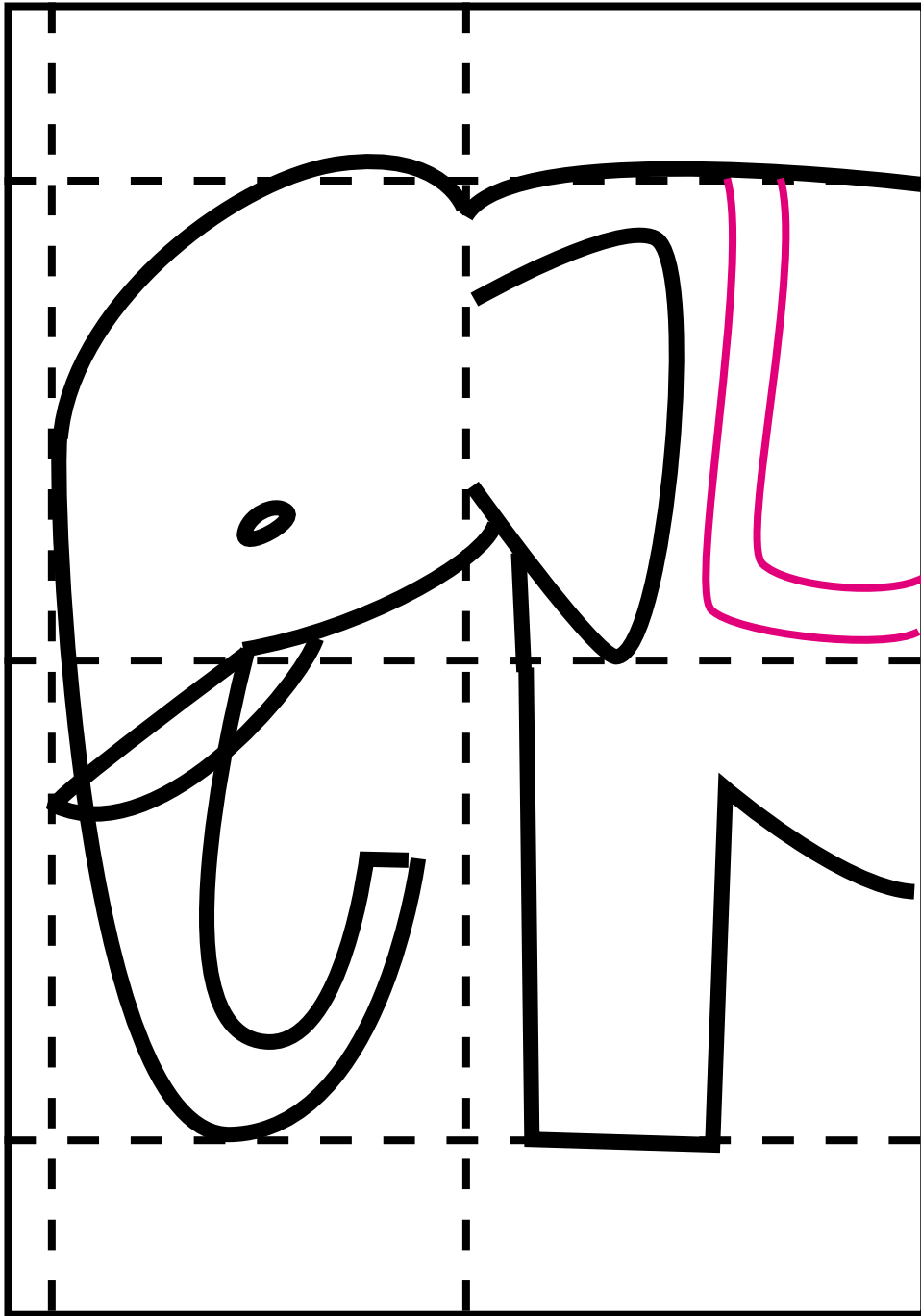
10.) Kopf



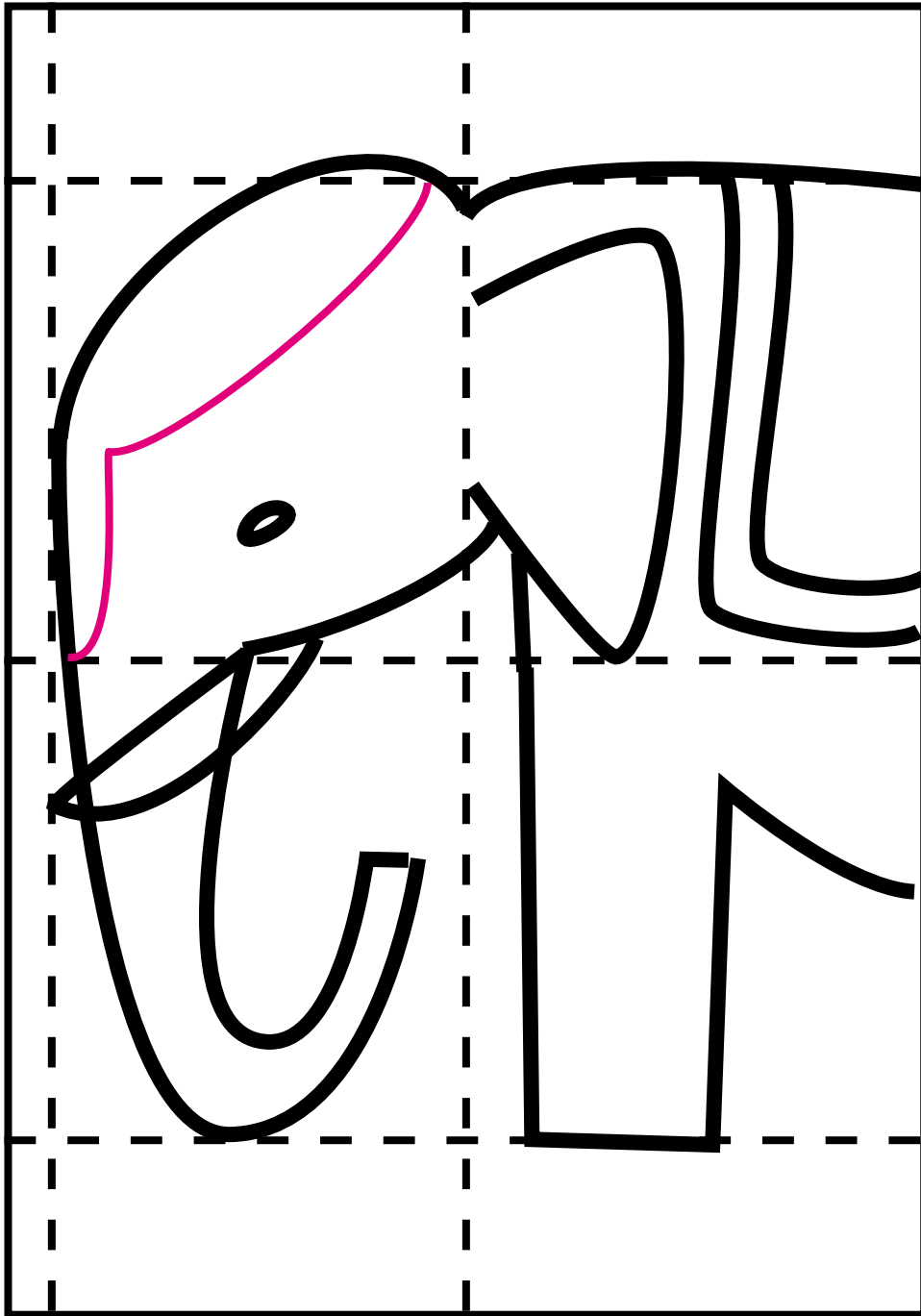
11.) Stoßzahn



12.) Fuß verlängern

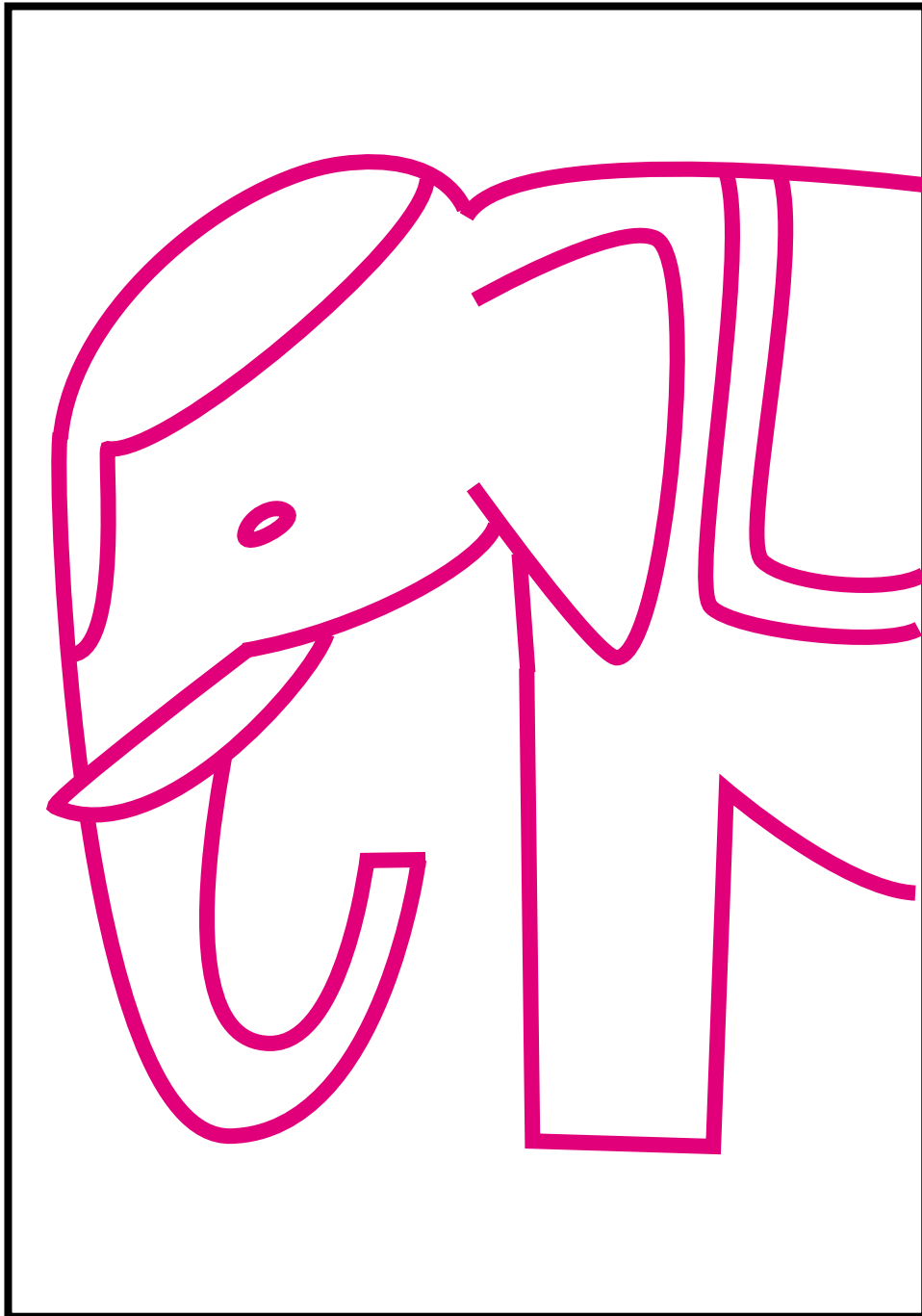


13.) Decke



14.) Kopfschmuck





15.) Kontur nachzeichnen  
-Achtung Stoßzahn